



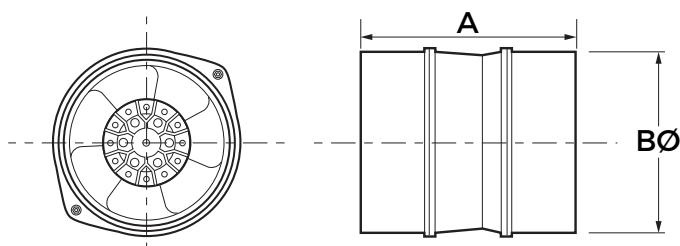
FT150F - Used in HTK (1 to 1 Rooms) Heat Transfer Kit

TECHNICAL DATA

Model No.	m ³ /hr*	L/sec*	Fan Speed (rpm)	dB(A) @3m	Watts	Volts
FT150F	324	89	2820	43	46	240

* Air Flow without duct and fittings

FAN DIMENSIONS



Model No.	A (mm)	BØ (mm)
FT150F	165	147

12 MONTHS WARRANTY

From date of installation

Minitube

Inline-Fan

The **Minitube Inline-Fan** is suitable for expelling or supplying cold or warm air in areas such as bathrooms, toilets, ensuites and homes.

MAIN FEATURES

- › Light weight and robust aluminium fan housing with plastic spigots.
- › Axial impellers made from high strength steel.
- › Matches 150mm standard duct size.
- › Can be mounted in any position.
- › Comes with plug and lead.

EXTRA FEATURES

- › Ask your installer about an **optional timer**.

GENERAL INFORMATION

- › The fan is designed for use in an ambient temperature of up to 40°C. It is not suitable for corrosive or explosive atmospheres.
- › Precautions must be taken to avoid back-flow of gases into the room from the open flue of gas or other burning appliances.
- › Inspect the fan at least once every 12 months to ensure the motor fan and blades are clean.

We strongly recommend installation by a qualified electrician.



FTPRO150F SHOWN

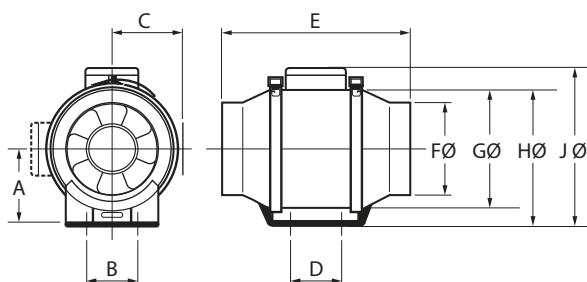
FTPRO150F - Used in HTK2 (1 to 2 Rooms) Heat Transfer Kits

FTPRO200F - Used in HTK3 (1 to 3 Rooms) Heat Transfer Kits

TECHNICAL DATA

Model No.	Speed	m ³ /hr*	L/sec*	Fan Speed (rpm)	dB(A) @3m	Watts	Volts
FTPRO150F	High	576	160	2520	45	50	240
	Low	443	123	1980	38	44	240
FTPRO200F	High	1008	280	2520	51	120	240
	Low	792	220	1980	44	100	240

FAN DIMENSIONS



Model No.	A	B	C	D	E	FØ	GØ	HØ	JØ
FT150PROF	112	60	127	80	295	147	200	225	236
FT200PROF	124	94	141	100	302	198	217	235	265

12 MONTHS WARRANTY

From date of installation

ProVent Inline-Fan

The **ProVent Inline-Fan** is suitable for expelling or supplying cold or warm air in areas such as bathrooms, toilets, ensuites and homes.

MAIN FEATURES

- › Two speed settings for air flow control.
- › Fan body can be removed for maintenance or repair without disturbing the duct system.
- › Integrated mounting foot makes for easier installation.
- › Can be mounted in any position.
- › Comes with 3-pin-point plug and lead.
- › **FTPRO150F** suits 150mm Standard Duct
- › **FTPRO200F** suits 200mm Standard Duct

EXTRA FEATURES

- › Ask your installer about an **optional timer**.

GENERAL INFORMATION

- › The fan is designed for use in an ambient temperature of up to 40°C. It is not suitable for corrosive or explosive atmospheres.
- › Precautions must be taken to avoid back-flow of gases into the room from the open flue of gas or other burning appliances.
- › Inspect the fan at least once every 12 months to ensure the motor fan and blades are clean.

We strongly recommend installation by a qualified electrician.